

#11 Mr. Friend

Alicia Renee Heckler

♩ = 96-108

Freely

mf

3

Voice

Handyman:

I don't par-tic-u-lar-ly love to come and go ne-ver real-ly know-ing

Fm

C

Piano

4

an - y - bo - dy's name.

See, I don't nec-ess - ar - i - ly love the feel-ing to be free, to

Fm

C

Fm

Fm

Pno.

7

wan-der night and day, not a rest a-long the way. But ev - ery now andthen You

C

Fm

C

Fm

F7

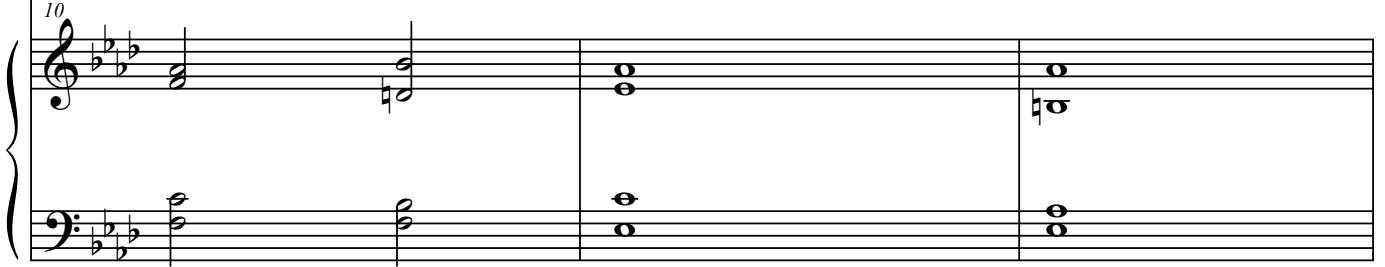
Pno.

10



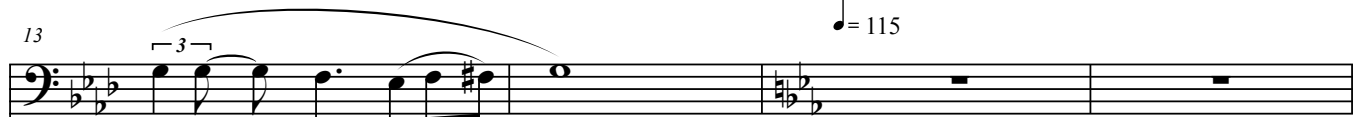
call me Mis - ter Friend, and the world I wish to lin - ger, on the tip of ev - ery fin - ger,
Fm Bb Ab Abm

Pno.



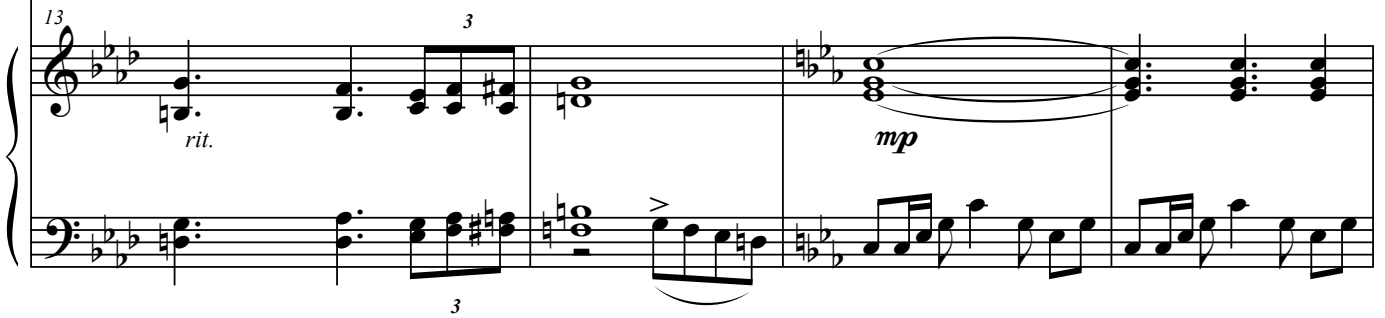
rit.

13



Is re - turned to me
G CmFm D7 G7 Cm

Pno.



mf

17



Who's the one to cure all the lone - li - ness? Mis - ter Friend
Cm G7

Pno.



21

Who can make a trou-bled wo - man sing? Mis - ter Friend. I

Pno.

Cm

Detailed description: This system contains the first four measures of the piece. The vocal line (bass clef) starts with a melodic phrase: G2, A2, B2, C3, B2, A2, G2, F2, E2, D2, C2. The piano accompaniment (treble and bass clefs) features a steady eighth-note bass line in the left hand and chords in the right hand. The key signature has two flats (Bb, Eb).

25

come with a mul-ti-col-ored rag and sponge Make me an of-fer, I'll take the plunge your

Fm Cm G7 Cm

Pno.

Detailed description: This system contains measures 5 through 8. The vocal line continues with: C2, D2, E2, F2, G2, A2, B2, C3, B2, A2, G2, F2, E2, D2, C2. The piano accompaniment includes triplets in the bass line. The key signature remains two flats.

29

mul - ti - use - ful, Mis - ter Friend.

G7 Cm

Pno.

Detailed description: This system contains measures 9 through 12. The vocal line continues with: C2, D2, E2, F2, G2, A2, B2, C3, B2, A2, G2, F2, E2, D2, C2. The piano accompaniment features a melodic line in the right hand and chords in the left hand. The key signature remains two flats.

33 *f*



Who's the one to com - ment on your new dress?

Cm

G7

33



mf

Sen - or A - mi - go!

Sen - or A - mi - go!

37



Who can come snake out the yuck - ies?

Mis - ter Friend I

Cm

37



41



come in wear - ing ei - ther plaid or stripes, I've come to help clean out your pipes Your

Fm

Cm

G7

Cm

41



Pno.

Pno.

Pno.

45

mul - ti - wit - ty, don't need pi - ty, Mis - ter Friend

Cm G7 Cm

Pno.

49

mp

Enchantress: Who can make me for -

Fm

mp

Pno.

53

get the dark - ness? Mis - ter Friend Whose

C7

Pno.

mf

Measures 56-59 of the vocal line. Measure 56 starts with a treble clef, key signature of two flats, and a 3-measure triplet. The melody continues through measures 57 and 58, ending in measure 59 with a quarter note and a half note.

charg-es are free, but the ser-vice is end - less? Mis - ter Friend. Who

Fm

Pno.

Piano accompaniment for measures 56-59. The right hand features chords and a melodic line, while the left hand provides a steady bass line. Measure 56 includes a 3-measure triplet in the right hand.

Measures 60-63 of the vocal line. Measure 60 starts with a treble clef and a 3-measure triplet. The melody continues through measures 61, 62, and 63.

comes with an au-to-mat-ic two-way a-ttraction who leaves me here in ut-ter sat-is - fac-tion the

B^bm

Fm

C7

Fm

Pno.

Piano accompaniment for measures 60-63. The right hand features chords and a melodic line, while the left hand provides a steady bass line. Measure 60 includes a 3-measure triplet in the right hand.

Measures 64-67 of the vocal line. Measure 64 starts with a treble clef and a 3-measure triplet. The melody continues through measures 65, 66, and 67.

sec - ret - ly naugh - ty

Mis - ter Friend!

C7

Fm

A^b

D^b7

Pno.

Piano accompaniment for measures 64-67. The right hand features chords and a melodic line, while the left hand provides a steady bass line. Measure 64 includes a 3-measure triplet in the right hand.

ff

68

Both: Who comes a whop-ping twen-ty eight miles rid-ing a yak? Mis-ter Friend! Pays a-

F#m C#7

Pno.

f

Detailed description: This system contains the first two staves of music. The top staff is a vocal line starting at measure 68, featuring triplets of eighth notes and a dynamic marking of *ff*. The bottom staff is a piano accompaniment with chords and a bass line, marked with a dynamic of *f*. The lyrics are: "Who comes a whop-ping twen-ty eight miles rid-ing a yak? Mis-ter Friend! Pays a-". Chord changes are indicated as F#m and C#7.

72

ten - tion to de - tail, won't stop 'til you're fin - ished Mis - ter Friend

F#m

Pno.

Detailed description: This system contains the second two staves of music. The top staff is a vocal line starting at measure 72, continuing the triplet pattern. The bottom staff is a piano accompaniment. The lyrics are: "ten - tion to de - tail, won't stop 'til you're fin - ished Mis - ter Friend". A chord change to F#m is indicated.

76

Whe-ther you're clean, or cov-ered in mud, Count on my friend to un-clog the crud, That

Bm F#m C#7 F#m

Enchantress:

Pno.

Detailed description: This system contains the third two staves of music. The top staff is a vocal line starting at measure 76, with a dynamic marking of *Enchantress:*. The bottom staff is a piano accompaniment. The lyrics are: "Whe-ther you're clean, or cov-ered in mud, Count on my friend to un-clog the crud, That". Chord changes are indicated as Bm, F#m, C#7, and F#m.

80 Handyman: *mf* Handyman: A woman, but damn tough

cos-tumed cu-tie, Ra-di-ant beau-ty, Both: Mis-ter Friend
C#7 F#m

Pno. *mf* *mp*

85 Enchantress: Just come here, hot stuff

Both: Mis-ter Friend
C#7 F#m

Pno. *mp* *f*